
GEOGRAPHY

9696/32

Paper 3 Advanced Physical Geography Options

October/November 2018

INSERT

1 hour 30 minutes

READ THESE INSTRUCTIONS FIRST

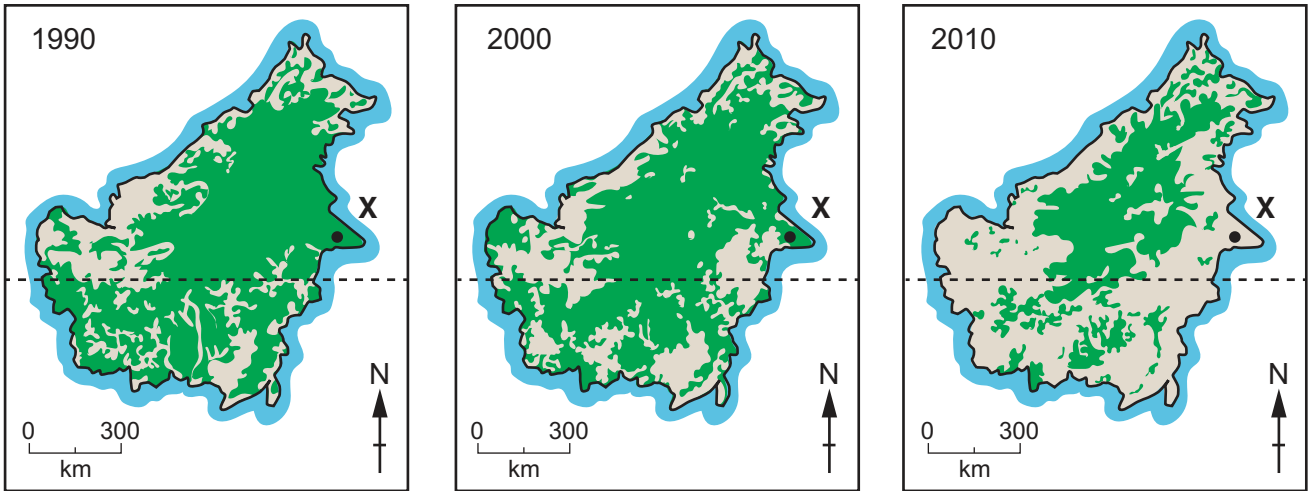
This Insert contains all the resources referred to in the questions.



This document consists of **6** printed pages and **2** blank pages.

Fig. 1.1 for Question 1

Areas of tropical rainforest in Borneo in 1990, 2000 and 2010



Key



-  tropical rainforest
-  deforested area
- equator

Fig. 1.2 for Question 1

Nutrient cycling for location X in Fig. 1.1 before and after deforestation

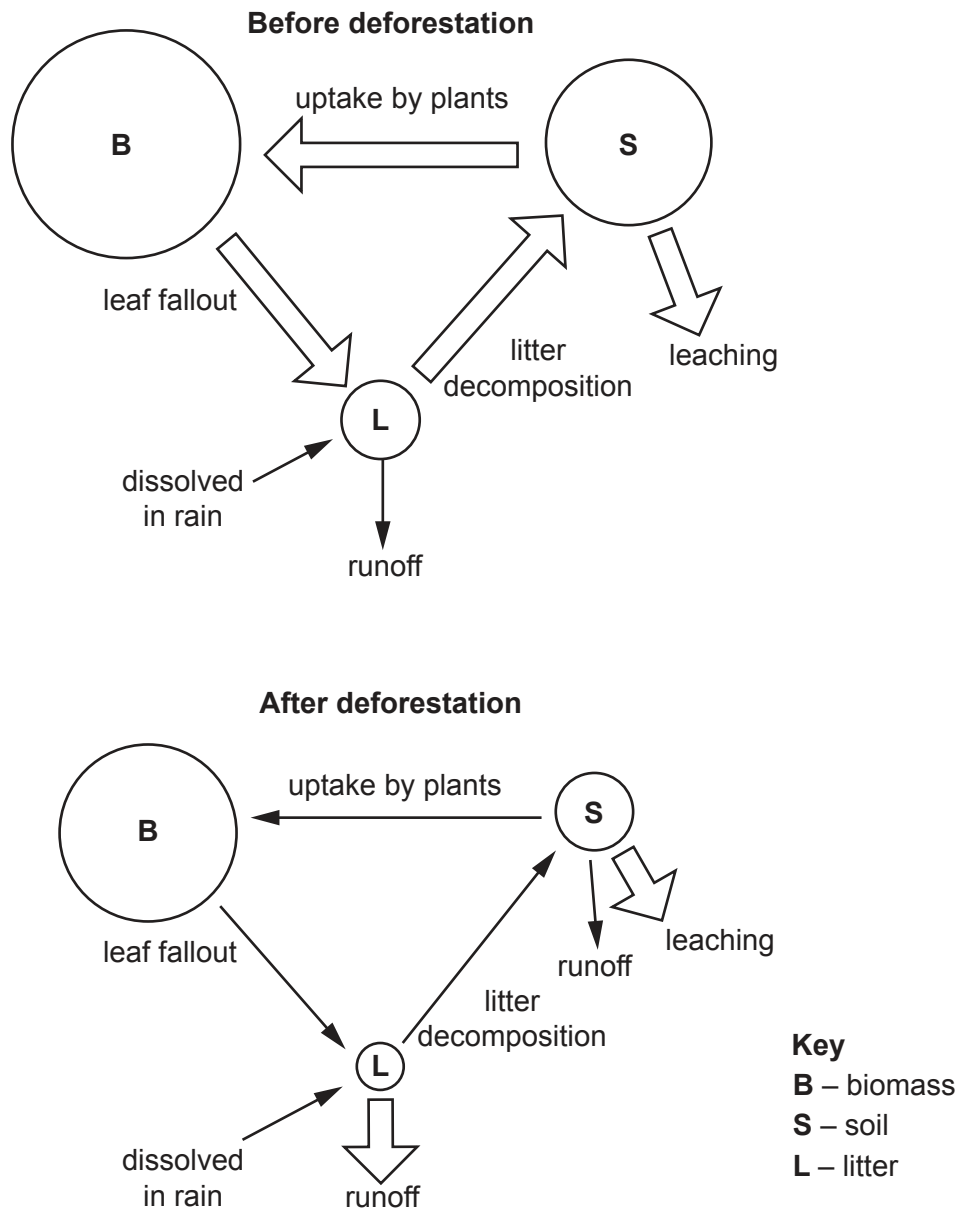


Fig. 4.1 for Question 4

A cliffed coastline

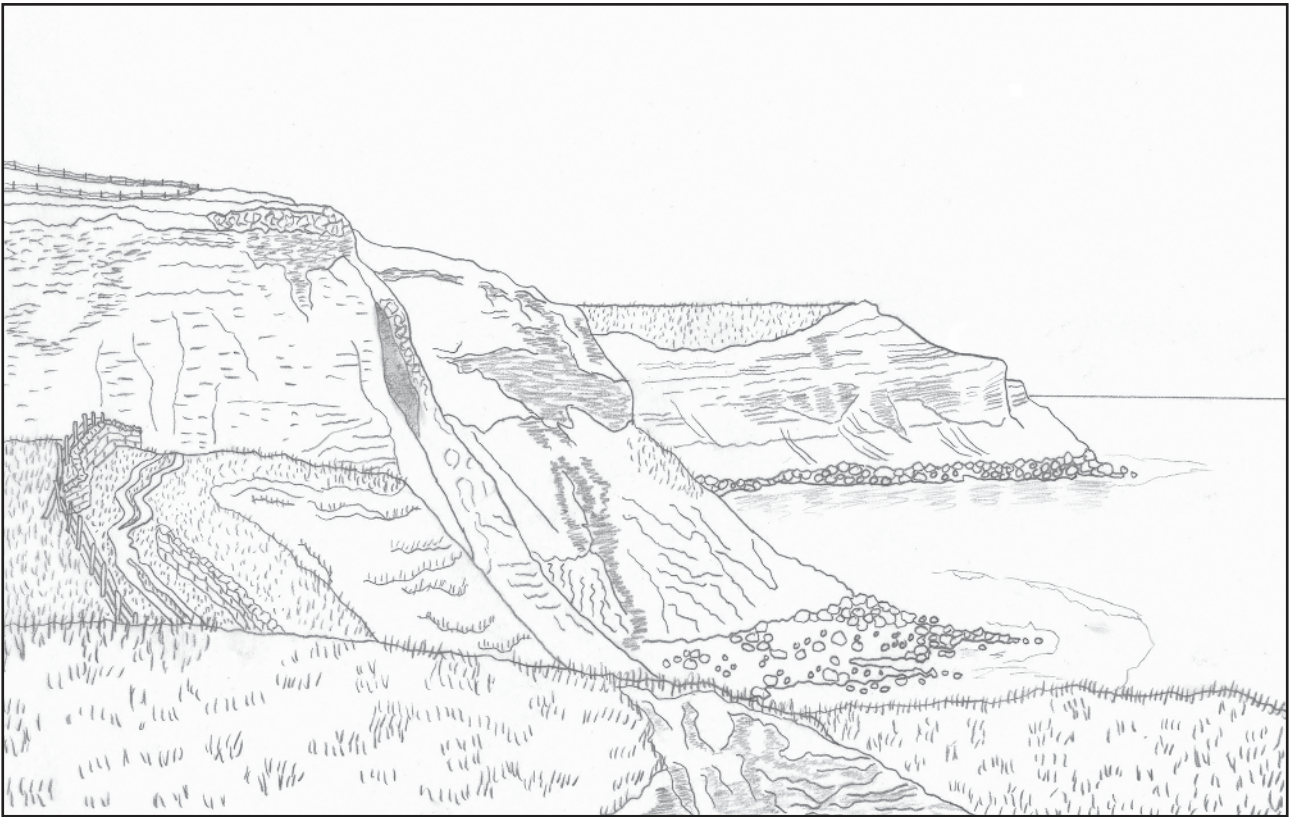


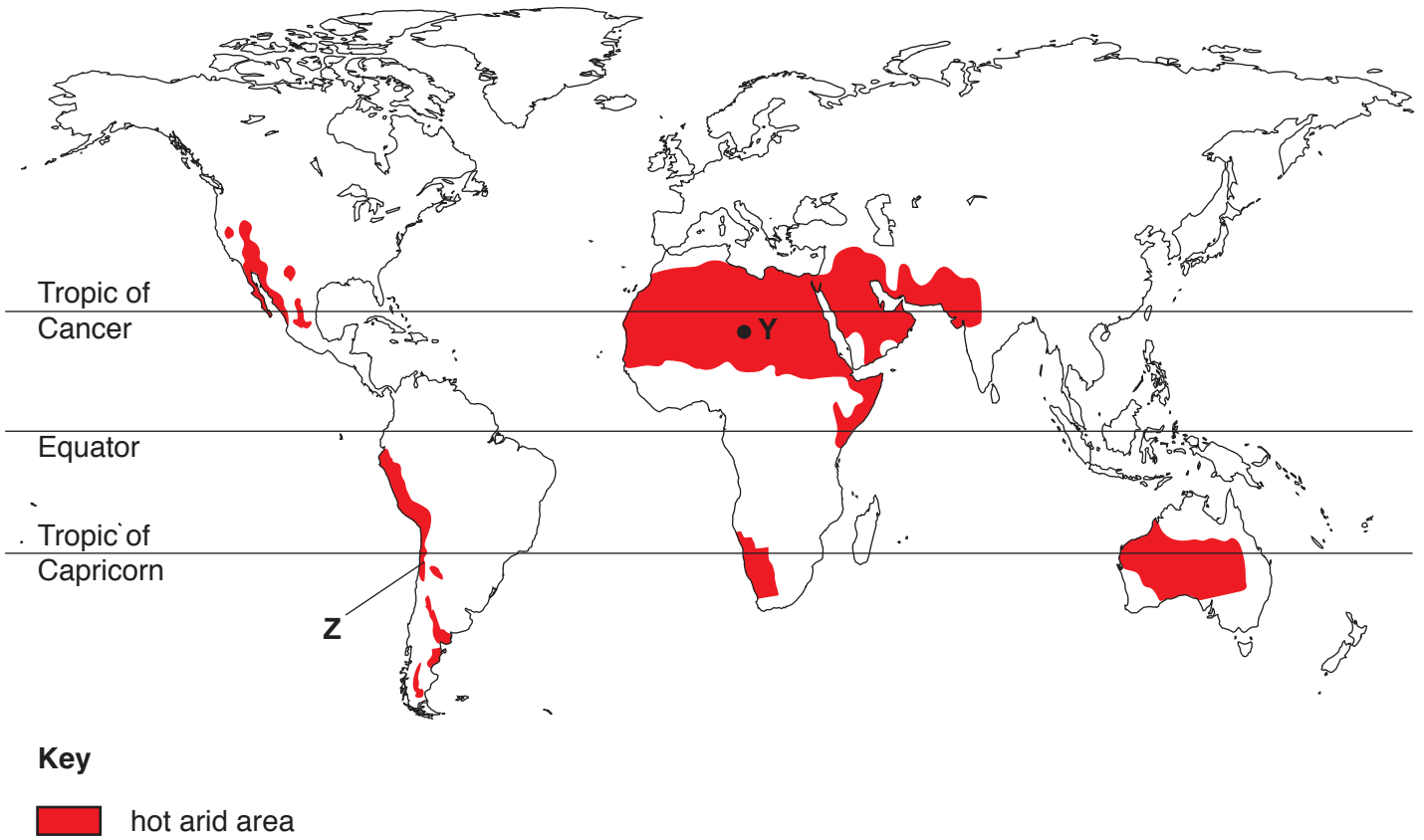
Fig. 7.1 for Question 7

A mass movement



Fig. 10.1 for Question 10

Global distribution of hot arid areas



BLANK PAGE

Permission to reproduce items where third-party owned material protected by copyright is included has been sought and cleared where possible. Every reasonable effort has been made by the publisher (UCLES) to trace copyright holders, but if any items requiring clearance have unwittingly been included, the publisher will be pleased to make amends at the earliest possible opportunity.

To avoid the issue of disclosure of answer-related information to candidates, all copyright acknowledgements are reproduced online in the Cambridge International Examinations Copyright Acknowledgements Booklet. This is produced for each series of examinations and is freely available to download at www.cie.org.uk after the live examination series.

Cambridge International Examinations is part of the Cambridge Assessment Group. Cambridge Assessment is the brand name of University of Cambridge Local Examinations Syndicate (UCLES), which is itself a department of the University of Cambridge.